



**Dr. Singh's**<sup>TM</sup>



**DR. SINGH PHARMACARE PVT. LTD.**

(AN ISO 9001 : 2008 & WHO GMP CERTIFIED COMPANY)

**Name of Quality**

**Research & Development**

Website : [www.drSinghpharma.com](http://www.drSinghpharma.com)



FOR THE TREATMENT OF INDIGESTION PALATABLE DIGESTIVE ENZYME

# COOKER-FD<sup>®</sup> Syrup

Fungal Diastase 50mg + Pepsin 10mg

*Fungal Diastase (1:1200) Derived from Aspergillus oryzae & Pepsin (1:3000) used as an effective digestive aid, helps in digestion of starch, carbohydrates, fats & proteins, used as digestive aid in case of loss of Appetite.*

- \* Indigestion
- \* Dyspepsia
- \* Loss of Appetite
- \* Constipation
- \* Typhoid
- \* Heart Burn
- \* Acidity
- \* Piles & Fistula

CKF



Sugar Free



Dr. Singh's<sup>™</sup>

DR. SINGH PHARMACARE PVT. LTD.

A Better way to treat Calcium deficiency with

# Marker-Z<sup>TM</sup> Tab.

Calcitriol 0.25 mcg + Calcium Carbonate 1250 mg Zinc Sulphate 7.5 mg

Promptly ensures calcium sufficiency

Enables better bioavailability & utilisation of calcium

Improves bone density and strength, relieves pain



MKZ



- \* Growing years
- \* Low back pain
- \* Patients on steroids
- \* Alcoholism
- \* Pregnancy
- \* Lactation
- \* Muscular cramps
- \* Osteoporosis
- \* Increases Bone Mass Density (BMD)
- \* Provides Pain Free Mobility
- \* Improves Quality of Life
- \* The Biologically Active form of Vitamin D3
- \* Prevents Uncontrolled Bone Reabsorption
- \* Prevents RENAL OSTEODYSTROPHY

Also Available

**Dr. Singh's**<sup>TM</sup>

DR. SINGH PHARMACARE PVT. LTD.

**Marker-Plus**<sup>TM</sup> Tabs.

Alpha Calcidol 0.25mcg + Calcium Carbonate 1250mg +  
Zinc Sulphate 7.5mg

**Marker**<sup>TM</sup>

Syp.  
Calcium Citrate 1000 mg + Magnesium 100 mg +  
Zinc 4 mg + Vitamin D3 250 I.U.

*In Heart Burn  
Acid Reflux*

# PUMPWIN<sup>®</sup>-DSR Cap.

Rabeprazole 20mg (Enteric coated Pellets) + Domperidone 30 mg  
(10mg as immediate release and 20mg as sustained release Pellets)

*Rapid Relief from acid reflux*

**Indications**  
In heart burn and acid reflux disease, active duodenal ulcer, active benign gastric ulcer, Erosive or Ulcerative gastro-oesophageal reflux disease (GORD), H. Pylori positive duodenal ulcer, Nausea and Vomiting

**Dr. Singh's**  
DR. SINGH PHARMACARE PVT. LTD.

**PWD**

- Domperidone acts as a prokinetic
- Rabeprazole as enteric coated pellets is the fastest acting PPI
- Combination offers 94% clinical cure in GERD patients

*Also Available*  
**PUMPWIN-20**  
Rabeprazole Sodium 20 mg

*Also Available*  
**PUMPWIN-IT**  
Rabeprazole Sodium 20 mg + Itopride 150 mg SR



The Final Verdict  
against infection

# Phalowin-SB<sup>TM</sup>

Ceftriaxone 1000 + Sulbactam 500 mg Inj.

### Indications

- \* Bacterial Meningitis
- \* Intra-abdominal Infections
- \* Preoperative Surgical Prophylaxis
- \* L.R.T.I
- \* Septicemia
- \* Skin & Soft Tissue Infections
- \* Bone & Joint Infections
- \* U.T.I., Typhoid Fever

- \* A third generation cephalosporin with Broad antimicrobial spectrum having increased gram-ve activity & good gram + ve coverage
- \* Higher sterilization of the CSF in 98-100% infants and children with meningitis than cefuroxime
- \* First line prophylaxis for contacts of patients with meningococcal meningitis With advantage of safe administration in Children and pregnant subjects
- \* Safe and effective for the treatment of serious infections due to multi-drug-resistant Gram-negative bacteria
- \* Produces bacteriological eradication rates > = 95% in adults with uncomplicated gonorrhoea
- \* Shows high cure rates in hospitalized community acquired pneumonia, similar to ertapenem

Ref.:

1. Drug 2002 ; 62 (7)
2. BMJ 1996; Vol.312 (7045):1536(15 June)
3. Drug Vol. 27 issue 6 Pg. 469-527
4. Drug 2002 ; 62 (7)
5. Clinical Infectious diseases 2002, Vol 34, no.8, pp. 1076-1083

PWS

**Phalowin-SB<sup>TM</sup>**  
Ceftriaxone 500 + Sulbactam 250 mg Inj

*Also Available*

**Phalowin-SB<sup>TM</sup>**  
Ceftriaxone 250 mg + Sulbactam 125 mg Inj

**Dr. Singh's**  
DR. SINGH PHARMACARE PVT. LTD.



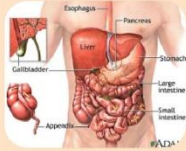
# Cintop<sup>TM</sup>-OZ Tab.

Ofloxacin 200 mg + Ornidazole 500 mg Tablets  
(Ofloxacin 50 mg + Ornidazole 125 mg) 5 ml Suspension



To treat diarrhoea & dysentery of Protozoal  
Bacterial & Mixed Infection

Ofloxacin with ornidazole appears to be an efficient &  
Cost effective modality for management of PID.



Indicated in :

- Diarrhoea & dysentery due to mixed infection
- Dental Infections
- GI Tract Infections
- Pelvic Inflammatory disease

### In Diarrhoea & Dysentery

% Cure Rate	Ornidazole	Tinidazole	Metronidazole
Intestinal E. histolytica	94%	67%	88%
G Lamblia Infactions	90%	90%	95%

Cintop<sup>TM</sup> Tab.  
200mg /400mg



Source - J. Tropical Med. Hyg. 1987 Feb; 90 (1):8-12



3D power intraumatic conditions

# Runwin-SP<sup>TM</sup>

Aceclofenac 100 mg+ Paracetamol 325 mg & Serratiopeptidase 15 mg Tab.



*Fights Both Pain & Fever*

**In**  
Pain & Fever  
Traumatic Injuries  
Post-operative swelling  
Dental caries & periapical abscess



ALSO AVAILABLE

### Runwin-S

Aceclofenac 100 mg +  
Serratiopeptidase 10 mg Tab.

### Runwin-CP

Aceclofenac 100 mg + Paracetamol 325 mg  
+ Chlorzoxazone 250 mg Tab.

### Runwin-200

Aceclofenac 200mg  
Sustained Release Tab.

RWS

### Runwin-P

Aceclofenac 100 mg +  
Paracetamol 325 mg Tab.

### Runwin-MD

Aceclofenac 100 mg  
Mouth Dissolving

Dr. Singh's<sup>TM</sup>

DR. SINGH PHARMACEUTICALS PVT. LTD.

**Comprehensive treatment for varied pain relief**



Ginseng have wonderful qualities to improve mood, for physical Performance, **REZUVENATING** properties and stimulate developments

# ZOOMER-G<sup>TM</sup> Cap.

Capsules of Ginseng with Multivitamin, Multimineral & Anti-Oxidants

Each hard gelatin capsule contains (approx.)  
 Ginseng Extract 42.5 mg.  
 (Highly concentrated standardised Ginseng extract corresponding to 212.5 mg of root of panax Ginseng)

Vitamin A	2500 I.U
Vitamin B1	1 mg.
Vitamin B2	1.5 mg.
Vitamin D3	200 I.U.
Vitamin B6	1 mg.
Vitamin B12	1 mcg.
Vitamin C	5 mg.

Folic Acid	0.15mg.
Calcium	75 mg.
Phosphorous	58 mg.
Ferrous Fumarate	30 mg.
Nicotinamide	10 mg.
Calcium D-Pantothenate	5 mg.
Magnesium Sulphate	3 mg.
Manganese Sulphate	0.5 mg
Copper sulphate	0.5 mcg.
Potassium Iodide	2 mg.
Zinc Sulphate	10 mg.
Energy Value	8.1 Kcals
Protein	20 mg.

**Indications**

- ▲ Growing Years
- ▲ Pregnancy
- ▲ Diabetes
- ▲ Cardio Vasular Disease
- ▲ Arthritis
- ▲ Infertility
- ▲ Ophthalmic Degeneration
- ▲ Enhance Immunity
- ▲ Physical performance
- ▲ Mental disorders
- ▲ Chronic illness.
- ▲ Skin Disease .

ZMG



**Makes Life Longer and Healthier**





*Faster results in less time*

# DANCER-XT<sup>TM</sup> Tab.

**(Ferrous Ascorbate 100mg & Folic Acid 1.5mg Tablets)**

Ferrous Ascorbate is superior molecule than other form of Iron  
Broadly used for the treatment of Anemia with combination of Folic Acid

**Indications**

- ★ Growing Years
- ★ Pregnancy
- ★ Lactation
- ★ Anemia
- ★ Chronic illness and other disease who need improvement of Haemoglobin

*Also Available*

**FEROSTAR-XT<sup>TM</sup> Syrup**  
Ferrous Ascorbate 100mg +  
Folic Acid 1.50 mg

DCX

**Dr. Singh's**  
DR. SINGH PHARMACARE PVT. LTD.

# Develop- DHA<sup>TM</sup> POWDER

Soya Protein + Multivitamin + Multimineral & DHA

## DHA Advantage

Improves neural and cognitive development.

## Protein Advantage

Protein is needed for the growth and development of healthy muscle, bone, blood, nerves as well as the specialized needs during pregnancy

## Nutritional Advantage

Gives additional nutritional requirement with calcium, iron, Folic acid vitamins & minerals



Available  
in  
Vanilla & Citric flavor

## Indications

- Growing Years
- Pregnancy
- Lactation
- Chronic illness
- Enhance Immunity

### Reference :

1. Collin I, Kolezik B, Curr opin clin Nutr Metab Care. 2008 May; 11(3):297-302
2. Clark, Micheal - Clinical Medicine Fourth Edition, Saunders, London, UK. 2000



DR. SINGH'S PHARMACEUTICALS PVT. LTD.

*Thank You Doctor*

*For Your Valuable **Rx** Support*

**Dr. Singh's**<sup>TM</sup>

DR SINGH PHARMACARE PVT. LTD.